

# AccessIP

The **AccessIP** unit offers a simple method of providing discreet emergency lighting in areas with harsh environmental conditions that require a surface mounted self-contained solution.

Available with an asymmetrical 'corridor' lens for escape routes; a symmetrical wide angle lens for general open areas or a symmetrical narrow beam lens for increased light levels and higher mounting positions the **AccessIP** downlight simply requires a permanent 230Volt supply to provide effective non-maintained emergency lighting with 3hour duration.

## Standard DALI/Self-Test

Incorporating tried and tested emergency driver technology the **AccessIP** downlight offers self-contained, non-maintained operation emergency lighting with integral automatic Self-Test or DALI controlled testing from a single product.

The polycarbonate enclosure houses the Lithium Iron Phosphate battery and charger/driver circuit and the appropriate lens is ultrasonically welded into the cover ensuring the IP65 rating (the cover can be rotated through 90° allowing the Corridor lens to be correctly aligned with the escape route).

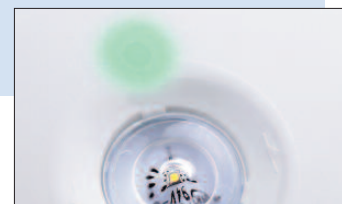
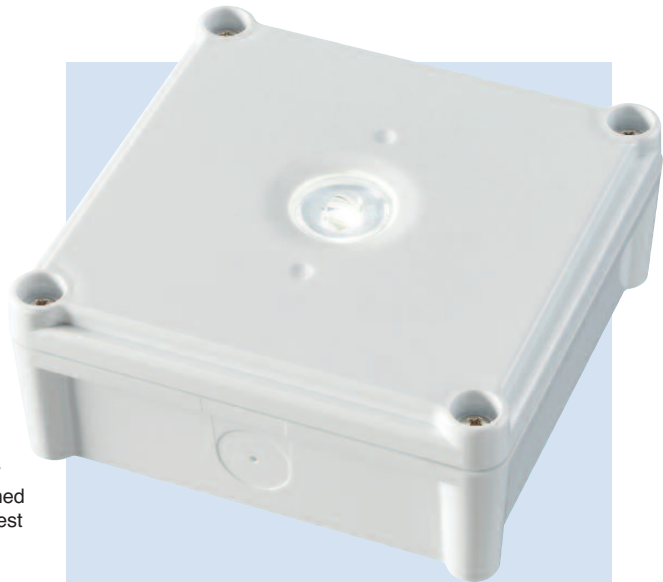
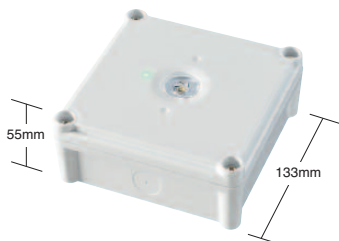
The **AccessIP** is robust but remains both discreet and attractive.



## SPECIFICATION

The surface mounting enclosure houses an 'intelligent' DALI/Self-Test LED driver and a Lithium Iron Phosphate (LiFePO<sub>4</sub>) battery. A Nichia '3Watt' high power white LED is mounted in the fascia plate in conjunction with a choice of wide angle, narrow angle or 'corridor' distribution lens.

The Lithium Iron battery technology ensures long life without the thermal concerns associated with the more common Nickel Metal Hydride battery technology.



Operation indicator LED shines through a skin in housing plastic



**Emergency Lighting Products Limited**  
Parbrook House, Gillmans Industrial Estate,  
Natts Lane Billingshurst, West Sussex RH14 9EZ

Telephone: +44 (0) 1403 786601  
Fax: +44 (0) 1403 786602  
e-mail: sales@elp.uk.com

**Safe in the knowledge**  
**elp.uk.com**

## IP65 Self-contained Downlight

# AccessIP

Fully integrated components and the latest software ensure that the **AccessIP** unit can be connected to any approved DALI control system. When the mains supply is initially connected, the **AccessIP** circuit initiates the Self-Test commissioning mode and then activates the weekly and annual test routine starting at random times to ensure tests do not get carried out simultaneously in the same areas.

Faults such as charge failure, battery failure, etc. will be indicated locally by a bi-colour LED. The **AccessIP** luminaire will continually be prepared for a DALI signal even when operating in Self-Test mode. If a DALI signal is received the Self-Test mode will be disabled and the circuit will adopt a fully interoperative DALI mode.

OPERATION	Subject	Plastic housing
Environmental	Protection against electric shock	Class II
	Ingress protection	IP65
	Rated operating ambient temperature	0 to 35°C
	Surface mounting	Includes flammable surfaces
Mains operation	Rated voltage supply	220/240V AC
	Mains frequency	50/60Hz
	Mains supply current	20mA
Emergency operation	Emergency duration	3 hours
	Battery recharge period	<24 hours
	Battery charging	Intelligent constant voltage
	Battery discharge current — nominal	370mA
	Lumen output	295lumens (max)
Mechanical	Integral test routine	EN62034/DALI
	Dimensions (Surface)	133mm x 133mm x 55mm (h)
	Mains input	Integral (unswitched) L&N terminals



ACIP/NM3/C/DALI/ST/WHT



ACIP/NM3/C/DALI/ST/BL

## Typical Emergency Lighting Spacings for available lenses

Mounting height Hm (m)	ACIP/CORRIDOR		ACIP/WIDE		ACIP/HL	
	Spacing (m) min 0.5Lux open area	Spacing (m) min 1Lux escape	Spacing (m) min 0.5Lux open area	Spacing (m) min 1Lux escape	Spacing (m) min 0.5Lux open area	Spacing (m) min 1Lux escape
2.0	n/a	14.0	13.9	12.8	n/a	n/a
2.5	n/a	15.3	15.1	14.0	n/a	n/a
3.0	n/a	16.5	14.8	13.6	n/a	n/a
3.5	n/a	17.1	13.6	11.9	n/a	n/a
4.0	n/a	18.3	9.8	8.4	8.9	n/a
6.0	n/a	17.4	8.7	7.1	9.9	n/a
8.0	n/a	13.5	7.9	6.0	11.9	n/a
10.0	n/a	11.7	7.0	n/a	13.3	n/a
12.0	n/a	10.4	6.2	n/a	13.1	n/a

NB: Full .LDT photometry files are available on request

## ORDER CODES

### ACIP/NM3/C/DALI/ST/WHT

## Description

White surface IP rated luminaire, self-contained DALI/Self-Test NM3 supplied with 'Corridor' lens

### ACIP/NM3/WIDE/DALI/ST/WHT

White surface IP rated luminaire, self-contained DALI/Self-Test NM3 supplied with 'WIDE' wide angle lens

### ACIP/NM3/HL/DALI/ST/WHT

White surface IP rated luminaire, self-contained DALI/Self-Test NM3 supplied with 'HL' high level lens

## OPTIONS

### /BL

Black Housing (instead of 'WHT' White)

**Emergency Lighting Products Limited**  
Parbrook House, Gillmans Industrial Estate,  
Natts Lane Billingshurst, West Sussex RH14 9EZ

Telephone: +44 (0) 1403 786601  
Fax: +44 (0) 1403 786602  
e-mail: sales@elp.uk.com

**Safe in the knowledge**

**elp.uk.com**