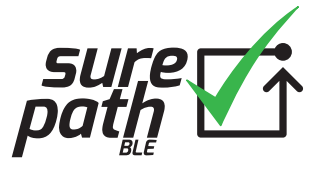


WIRED AND BLUETOOTH MESH WIRELESS EMERGENCY LIGHTING TEST SYSTEM

Advanced Emergency Lighting Test System





SurePath is available in both wired (**SurePath**) and wireless (**SurePathBLE**) versions



SurePath and SurePathBLE are standalone Emergency Lighting test systems, providing testing and reporting to BS EN 62034.

The systems simplicity means the user can be assured that their Emergency Lighting installation is being routinely tested and monitored in accordance with BS EN 50172.

The design and size of the innovative full colour touch screen makes setting up test schedules or checking test results very simple.

Each **SurePath** and **SurePathBLE** panel is capable of connection to 128 devices. For larger installations, **SureLink** software can be deployed to provide a fully scalable system.

Once commissioned, the **SureLink** system will carry out function tests and duration tests automatically on scheduled dates and times. While everything is healthy the **SurePath/SurePathBLE** screen will remain blank unless touched in which case it will show the 'tick' screen indicating all is well.

In the event of a failure during a test, or if a battery/charger problem occurs, the screen will automatically come on with a warning triangle and, if selected during commissioning, the integral warning buzzer will also sound.

OPERATIONAL FEATURES

Operational features of the **SurePath** system include:

- ✓ Password protected active functions
- ✓ Commissioning data can be entered via the touch screen, a USB dongle or **SureLink** software
- ✓ Devices can be addressed individually, by 'Network' or by 'Group'
- ✓ **SurePath** will automatically find replacement devices during maintenance
- ✓ Automatic status notifications are logged in **SurePath's** non-volatile memory and can be downloaded by USB or **SureLink** software
- ✓ **SurePath** is IoT-ready



When the screen is active simple touch buttons are also enabled that allow easy access to any fault reports or a password protected engineer's menu.

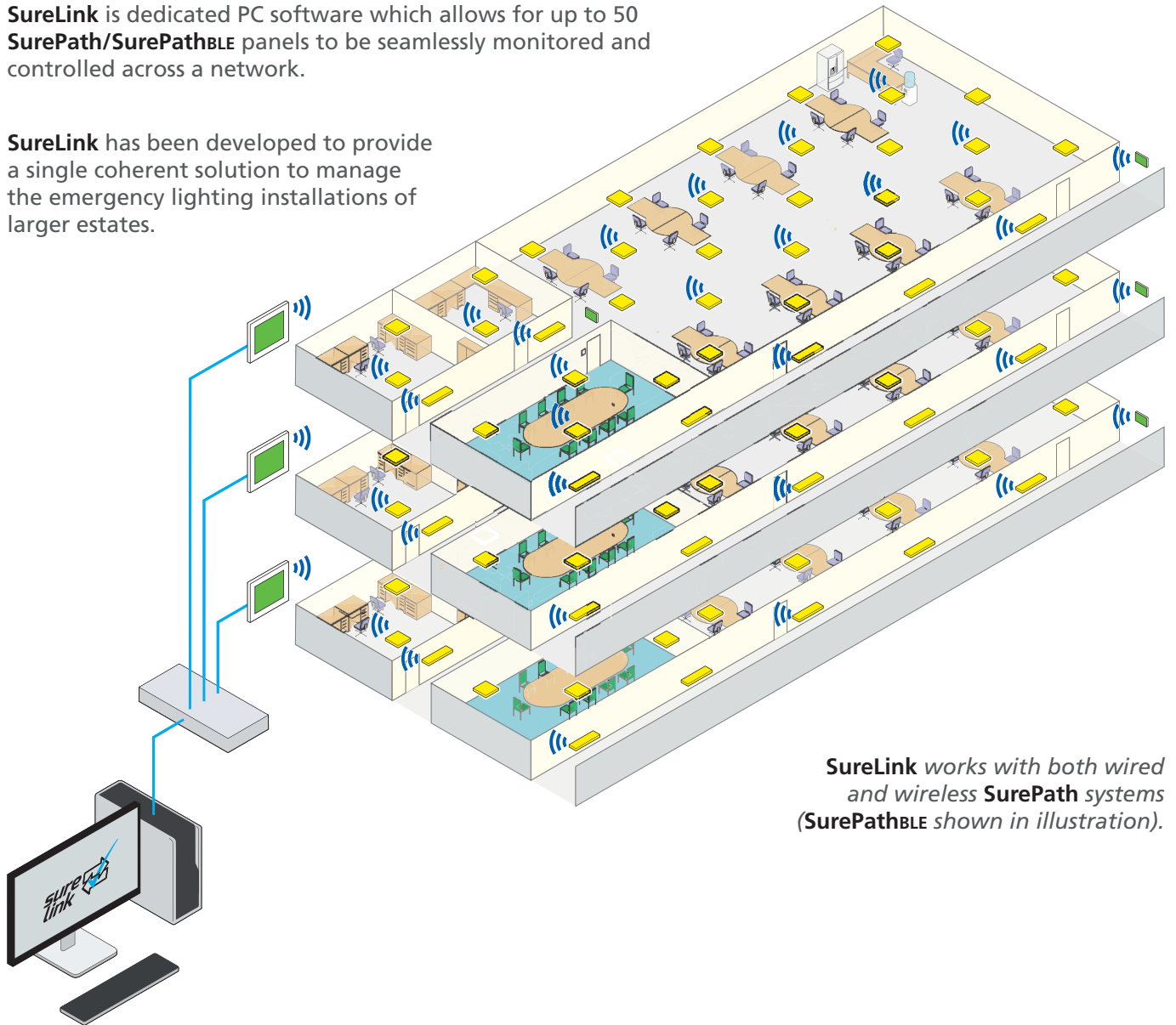
Alternatively, a **SureLink** enabled system can be configured to automatically notify a maintenance engineer of both the nature and location of any faults. These detailed system reports allow for a strategy of planned maintenance to be implemented.

SurePath and **SurePathBLE** panels comply with EN 61347-2-11

SureLink NETWORKING SOFTWARE

SureLink is dedicated PC software which allows for up to 50 **SurePath/SurePathBLE** panels to be seamlessly monitored and controlled across a network.

SureLink has been developed to provide a single coherent solution to manage the emergency lighting installations of larger estates.



*SureLink works with both wired and wireless **SurePath** systems (**SurePathBLE** shown in illustration).*

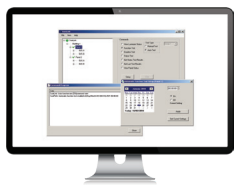


SurePath - HARD WIRED FOR RELIABILITY



SurePath is a hard-wired system. This ensures the most reliable connection and is ideal for new build applications and use in metal-clad structures.

- ✓ Integral mains supply
- ✓ Two DALI busses (2 x 64 devices)
- ✓ Automatic addressing of replacement gear
- ✓ Automatic fault indication to maintenance partner (optional)
- ✓ IP addressable
- ✓ Screen branding to order
- ✓ Simple operation
- ✓ BSI Tested
- ✓ Complies with EN 62386 DALI standard
- ✓ Routine function and duration tests
- ✓ Detailed test results on screen
- ✓ Automatic fault indication
- ✓ Downloadable test data
- ✓ Fault buzzer (software enabled)
- ✓ Operates with multiple durations (60 mins, 90 mins, 180 mins etc)
- ✓ Surface or recessed mounting
- ✓ UK design, manufacture and software intellectual property

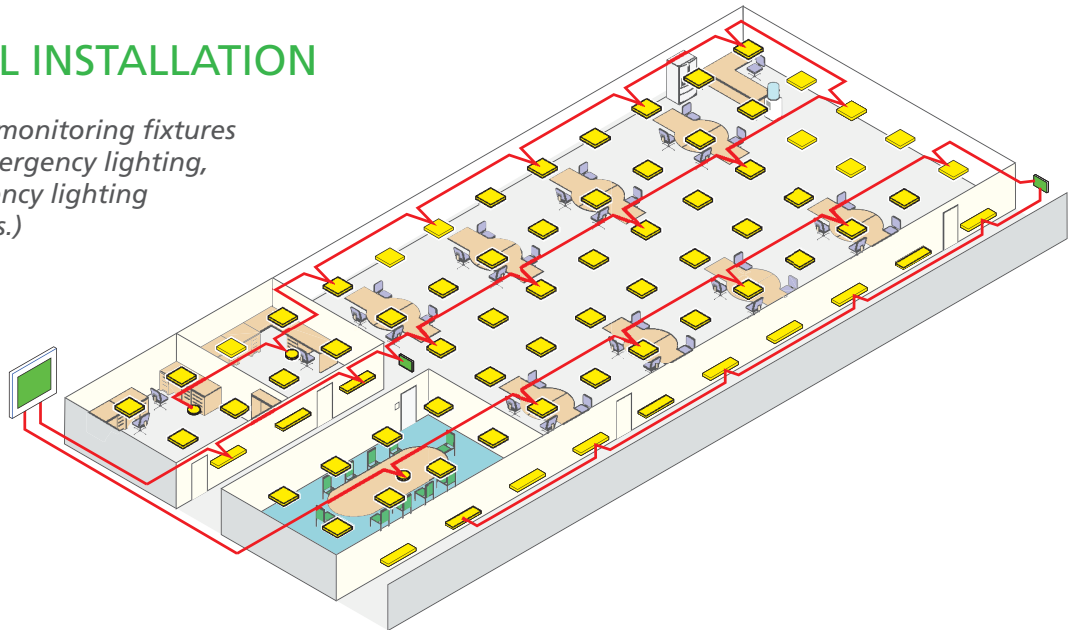


- ✓ Encrypted networking
- ✓ Monitors and controls up to 50 panels

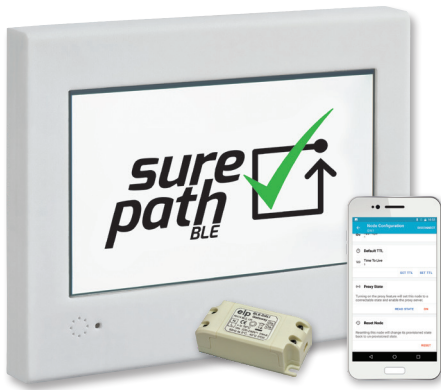


TYPICAL SMALL INSTALLATION

(Single **SurePath** panel monitoring fixtures including dedicated emergency lighting, luminaires with emergency lighting operation and exit signs.)



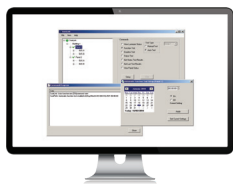
SurePathBLE - WIRELESS FOR CONVENIENCE



SurePathBLE is a Bluetooth wireless system. This provides great flexibility and is ideal for refurbishments and applications where easy expansion is important.

- ✓ Integral Bluetooth antennae
- ✓ Integral mains supply
- ✓ Two Bluetooth Mesh networks (2 x 64 devices)
- ✓ Commissioning made simple using Android App
- ✓ Automatic addressing of replacement gear
- ✓ Automatic fault indication to maintenance partner (optional)
- ✓ IP addressable
- ✓ Complies with EN 62386 DALI wifi standard
- ✓ Screen branding to order
- ✓ Simple operation
- ✓ Routine function and duration tests
- ✓ Detailed test results on screen
- ✓ Automatic fault indication
- ✓ Downloadable test data
- ✓ Fault buzzer (software enabled)
- ✓ Operates with multiple durations (60 mins, 90 mins, 180 mins etc)
- ✓ Surface or recessed mounting
- ✓ UK design, manufacture and software intellectual property

“ SurePathBLE is a system comprising of three core elements: a control panel, Bluetooth Gateway modules and SureLink networking software. ”



- ✓ Encrypted networking
- ✓ Monitors and controls up to 50 panels

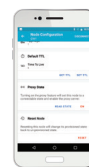
GATEWAY MODULE



- ✓ Convert DALI emergency luminaires into Bluetooth luminaires
- ✓ Compact design (designed to fit in any emergency luminaire)
- ✓ Suitable for use in any DALI compatible emergency luminaire



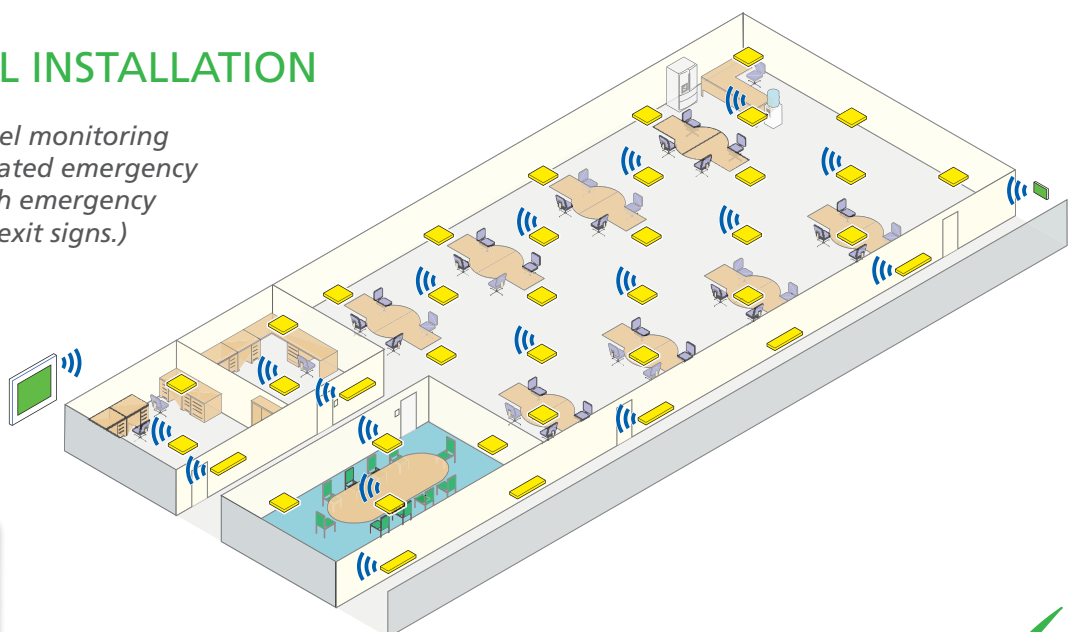
ANDROID APP



- ✓ Handy commissioning tool
- ✓ Convenient and portable

TYPICAL SMALL INSTALLATION

(Single SurePathBLE panel monitoring fixtures including dedicated emergency lighting, luminaires with emergency lighting operation and exit signs.)





emergency lighting products

Emergency Lighting Products Limited

Parbrook House
Gilmans Industrial Estate
Billingshurst
West Sussex RH14 9EZ
United Kingdom

Tel: +44 1403 786601

Fax: +44 1403 786602

Email: sales@elp.uk.com

Web: www.elp.uk.com



© Copyright Emergency Lighting Products Ltd 2020. The contents of this brochure have been thoroughly checked for accuracy but no responsibility can be accepted for potential errors. Content may not be reproduced without written permission.

