

# Static Inverter Central Battery Systems

## SPS

The **SPS** Static Inverter Central Battery System units provide a 230V AC supply in the event of loss of the normal mains supply. **SPS** is designed to operate third party mains luminaires at full output as either maintained, switched maintained or non-maintained luminaires for 3 hours.

**SPS features five models with maximum power output ranging from 99W to 574W.**

Compact **SPS** units incorporate an inverter which provides and maintains the voltage of 230 VAC  $\pm 3\%$  (50Hz) on all output circuits. The output voltage is supplied from the normal mains supply or, in the event of a mains failure, from the integral 12 volt, 10 year life Valve Regulated Lead Acid batteries.

**SPS** complies with the requirements of BS EN 50171 (*central power supply systems*) and BS EN 62034 (*automatic test systems for battery powered emergency escape lighting*).

All **SPS** systems are protected against extensive load and short circuit and the output circuits are continuously monitored and any failure is clearly identified on the front panel. As standard, **SPS** are equipped with a number of functions that can be programmed by means of the built-in www server and, optionally, a networking application.

Use of Modbus and BACnet protocols allows integration of the **SPS** unit in to BMS (Building Management System). The compact design of the cabinets allows for discrete installation compared to traditional larger systems.

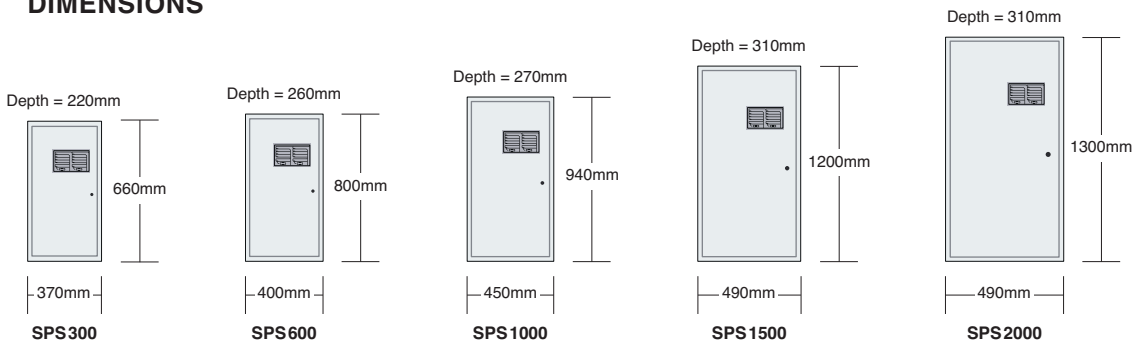


The **SPS** Static Inverter Central battery System can operate as stand-alone or they can be easily networked together.

### TECHNICAL SPECIFICATION

	SPS300	SPS600	SPS1000	SPS1500	SPS2000
Supply voltage	Single phase 230V $\pm 10\%$ , 50/60Hz				
Battery capacity	26aH	55Ah	80Ah	120Ah	150Ah
Maximum power (3 hours)	99W	209W	303W	458W	574W
Number of circuits	6	6	12	12	12
Cable entries	17 x M20	17 x M20	17 x M20	25 x M20	25 x M20
Max length of circuits	200m (1.5mm <sup>2</sup> ) / 300m (2.5mm <sup>2</sup> )				
Weight (kg)	25.4	51.5	59.6	114.3	142.5
Dimensions (mm)	660 x 370 x 220	800 x 400 x 260	940 x 450 x 270	1200 x 490 x 310	1300 x 490 x 310

### DIMENSIONS

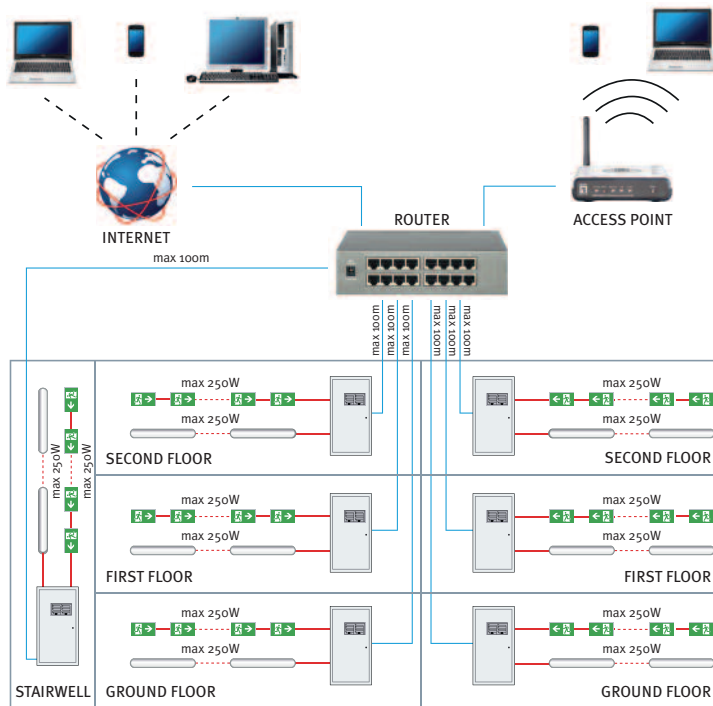


All details and specifications shown in this document are deemed correct at time of publication. The right to modify equipment, change specifications and instructions without notice, is reserved as part of the Emergency Lighting Products Limited policy of continuous development and improvement. We endeavour to keep all our customers informed of any alterations as and when they occur.

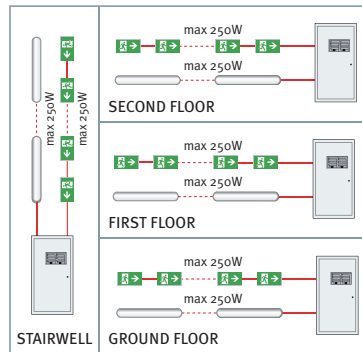


# Static Inverter Central Battery Systems

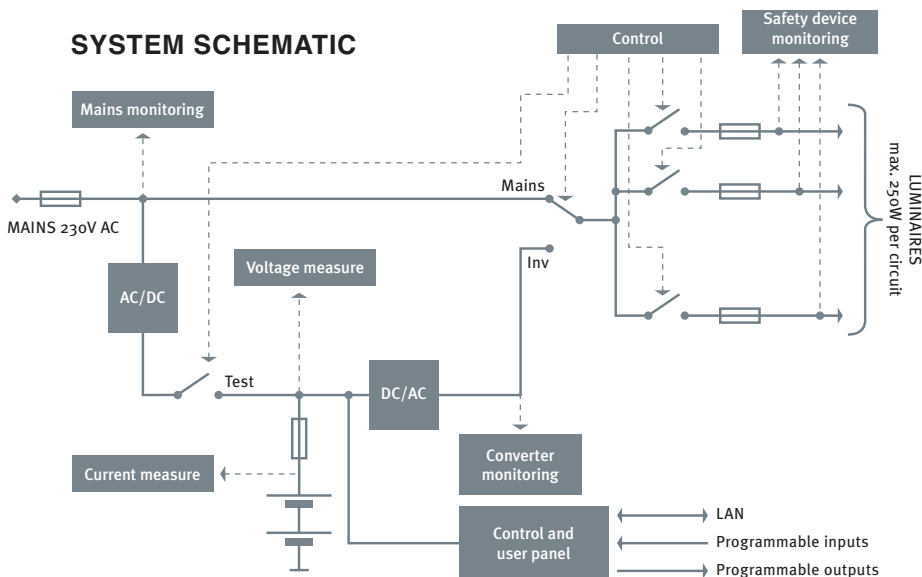
## SPS



**NB:** The SPS range allows selection of larger systems with more output circuits, higher power capacity and different emergency lighting durations.



### SYSTEM SCHEMATIC



All details and specifications shown in this document are deemed correct at time of publication. The right to modify equipment, change specifications and instructions without notice, is reserved as part of the Emergency Lighting Products Limited policy of continuous development and improvement. We endeavour to keep all our customers informed of any alterations as and when they occur.